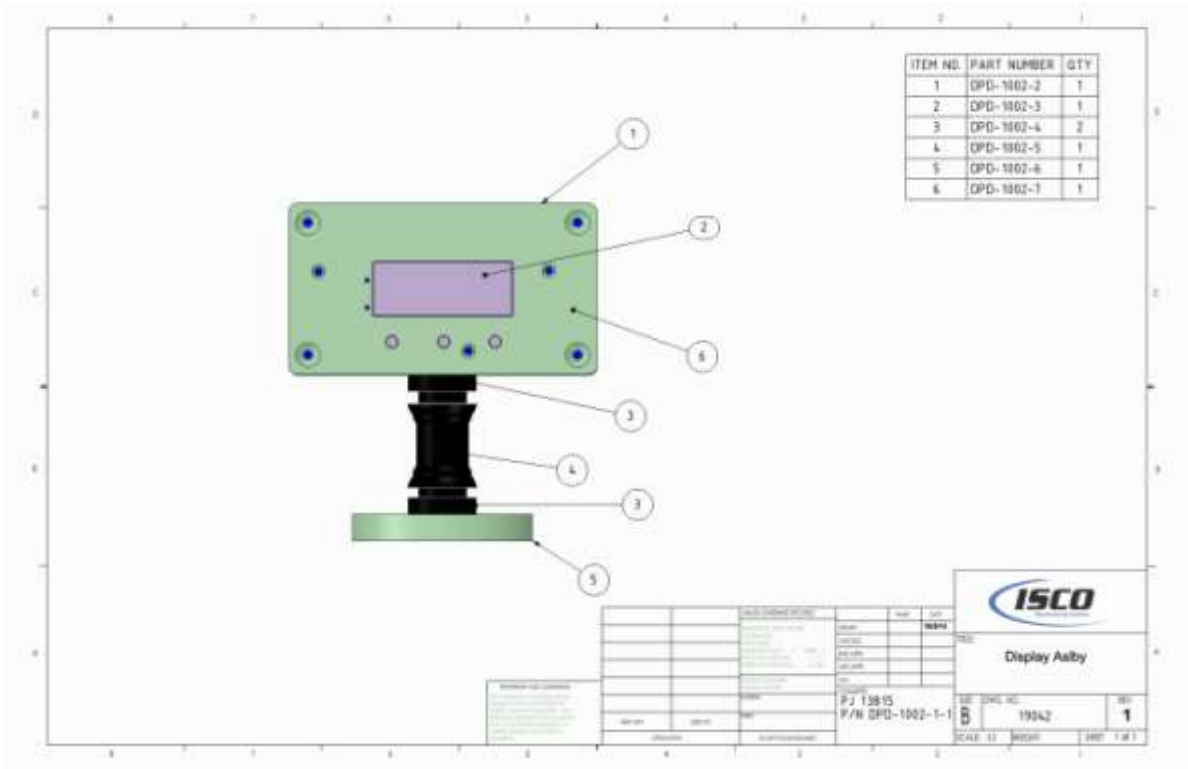




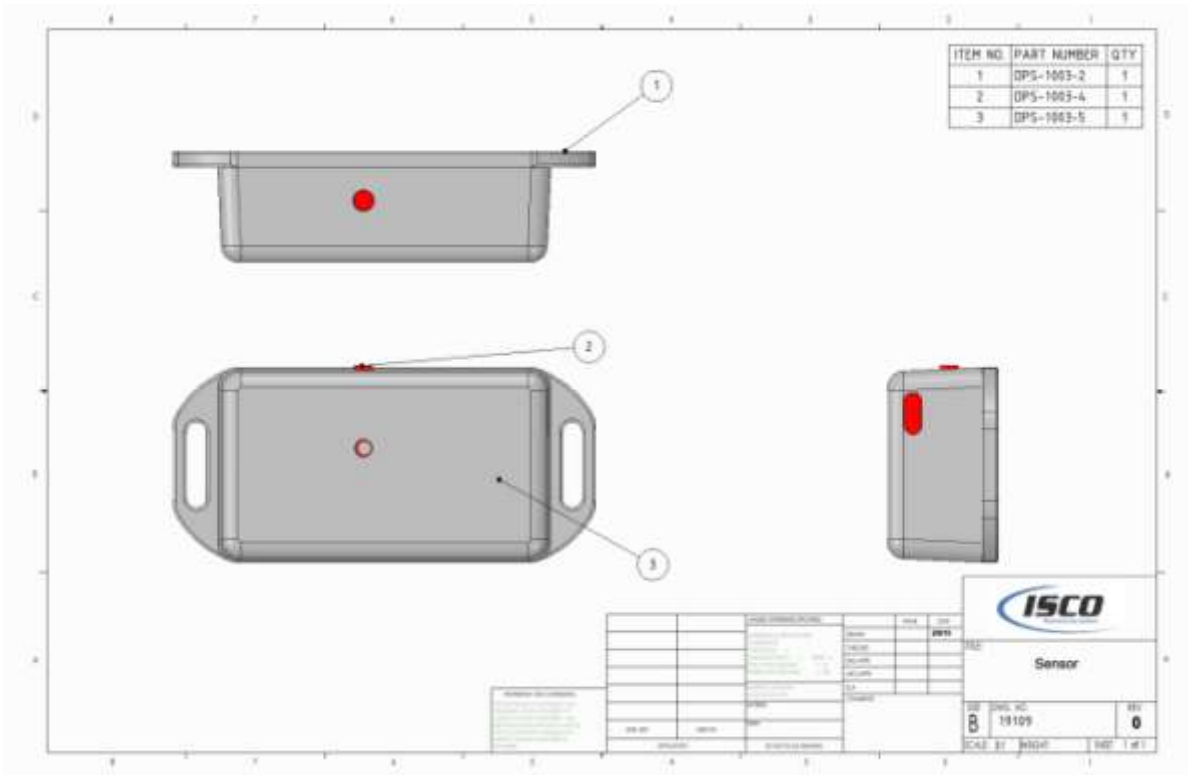
Digital Protractor

Instruction Manual





Display Asby	
P/J 13815 P/N DPD-1002-1-1	REV: 0 DATE: 1994Z SCALE: 1:1 SHEET: 1 of 1



Sensor	
P/J 13815 P/N DPS-1003-1-1	REV: 0 DATE: 19109 SCALE: 1:1 SHEET: 1 of 1

Thank you for your purchase of the TubeShark Digital Protractor.

This tool has been designed and constructed for long lasting and precise accuracy if it is taken care of. Please use care in keeping both the sensor and the display unit clean and dry.

Your new Digital Protractor and Sensor will need to be fully charged prior to use.

Use the supplied power supply to charge both the Display and the Sensor. It will take a couple hours to get a full charge on each of the units.

There will be a green and red LED light that will illuminate when the power supply is plugged in, and the red LED light turns off once the unit is fully charged. The green LED light will stay lit until it is unplugged from the power supply.

Once the units have been charged, there are a few steps that will need to be completed prior to using:

The Sensor will need to be mounted on your bender or in the level base. In order to mount the Sensor to the bender, follow these simple instructions and use the provided template. You will need a drill and tap for the supplied 6-32 screws.

Align the template as shown then drill and tap the two holes in the dorsal plate. Attach the Sensor using the provided screws. Note that the Sensor's "power on" button needs to be facing the axle bolt in the center of the dorsal plates.

Operation

To use your digital protractor, push and hold the power button on the sensor until the green light flashes. Then push and hold the Display's power button until the display screen lights up. For all new units push the Display's SYNC button to link the Display with the Sensor before the first use. This is the initial set up and will only have to be done once because the Sensor and Display will remain linked

If the display is showing "sync", then the two units have not been linked and will require the SYNC process to be completed.

If the display is showing "----" this means that either the sensor is turned off or the Display unit isn't linked to this Sensor. Turn on the Sensor making sure the green light blinks once. If this doesn't clear the "----", then pushing the SYNC button on the display will link the Sensor to the Display.

If the display is showing "tilt" then the Sensor is in a horizontal position and needs to be returned to an upright, vertical position before an angle can be determined.

The Protractor is configured to be used as an actual level or can be reset to any new zero base line. When the system is powered up, the default is standard level. If you would like to set a new zero plan, push the zero button on the Display once. When this is done, the system will use the new zero plan until a new zero is defined or until the unit is powered off.

To power down the Sensor unit, press and hold the power button on the sensor until the green light flashes about 4 times. To power down the Display unit, press and hold the power button on the Display until the LED light turns off.

WARRANTY

All TubeShark Digital Protractor are warranted from the factory to be free of defects in materials and workmanship for **ONE YEAR** from the date of purchase except as noted below. The determination of the validity of any warranty claim is at the sole discretion of GRB. Under this warranty, GRB's liability is limited solely to the repair or replacement of equipment, which they manufacture. This warranty does not cover damage due to normal wear, abuse or neglect.

RETURN AND CANCELLATION POLICY

1. All sales are considered final at the time of shipment.
2. Items returned for warranty service will be examined within 10 working days of receipt. An estimate will be written that describes which, if any, repairs are not covered under warranty. The purchaser must authorize any non-warranty repairs before they will be done. GRB will pay return freight on all warranty repairs. Return freight on non-warranty repairs will be billed to purchaser.
3. Call before returning any item to obtain a return authorization number. No returned item will be accepted without a return authorization number clearly printed on the outside of the package.



63055 Corporate Place #3 • Bend, Oregon 97701
PO Box 8008 * Bend, OR 97708-7378
(541) 382-1573 • Fax (541) 382-6902

E-mail: sales@grbinnovations.com

www.tubeshark.com